

## **Integrated Clinical Services**

Our program offers a very detailed structured supports for persons who have not been successful in traditional IDD programs.

The supports are diagnostically driven and are grounded in strong clinical and therapeutic principles.

*We provide an array of services, including Behavioral Supports, Clinical and Program Development, Consultation, and Training.*



For additional information,  
questions or referrals please  
contact:

### ***Grishma Solanki***

***Director of Integrated Clinical Services***  
***solankig@archumanservices.org***

***724-745-3010 ext. 118***

**Or**

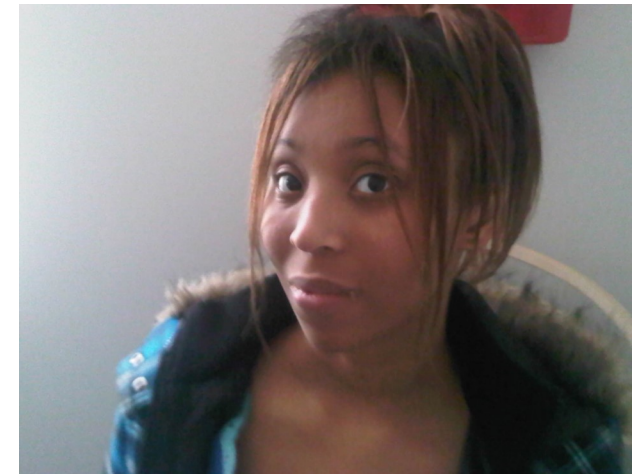
### ***Karen Gleason***

***Coordinator of Integrated  
Clinical Services***

***gleason.karen@archumanservices.org***



## **Integrated Clinical Services**



470 Johnson Road  
Suite 200  
Washington, PA 15301  
(724) 745-3010  
[www.archumanservices.org](http://www.archumanservices.org)

## **Integrated Clinical Services Behavior Supports (W7095)**

Arc Human Services' clinical supports were developed to aid people with IDD and who also struggle with significant and complex mental health disorders. We recognize that many of these individuals have also experienced substantial trauma or adverse experiences that continue to impact them. Many are often diagnosed with or are presenting features found in Axis II mental health disorders and Post Traumatic Stress Disorder (PTSD). They are among the most challenging dually-diagnosed individuals supported by our IDD and MH systems.

Our Integrated Clinical Services offers a detailed structure of supports for those who struggle in traditional IDD programs. Each plan is diagnostically driven and grounded in strong clinical and therapeutic principles. We believe that respect for the individuals we care for includes extensive specialized training, plan development and guidance for the family and team members.

We provide an array of services, including Behavioral Supports, Clinical and Program Development, Consultation, Training, and Skill Building Services.

## **Key Arc Human Services Behavior Support Components and Features:**

- Team driven structure for the identified person(s).
- The individual(s) receiving our services and the team members working with them are the person's team. The person guides the team, but all decisions are a team decision.
- Our services are catered to create an open dialog between team members and the individuals that we support.
- We nurture a safe, welcoming environment with open lines of communication where all ideas are shared without judgment.
- We develop team driven outcomes and goals. Together we determine what "success" means for us.

Services we offer are grounded in the principles of Trauma Informed Care.

Our individualized plans are developed in order to provide structure and guidance to the team. Our Master and Bachelor level clinicians will counsel and guide the development of Personal Health and Safety Plans (SEEP), Behavior Support Plan (BSP), Crisis Plans, etc.

Additional supports for the individual come from the Clinical and Supervisory/Administrative members of Arc Human Services, who support the Behavior Specialist Consultant (BSC) and residential teams. We provide clinical supervision, guidance, mentoring and leadership to ensure the individual's and team's needs are properly processed.



### **We provide the following array of services:**

- Behavioral Supports Consultant (BSC) Services (W7095)
- Clinical and Program Development Consultation
- Sensory Assessments
- Functional Behavior Assessments
- Trauma-Informed Care Training
- Diagnostic Training
- Behavior v/s Symptom Guidance
- BCBA Supervision
- Clinical Supervision
- Clinically Guided SEEP Development
- Cultural Competency

*Other Clinically Guided Trainings  
Available Upon Request*